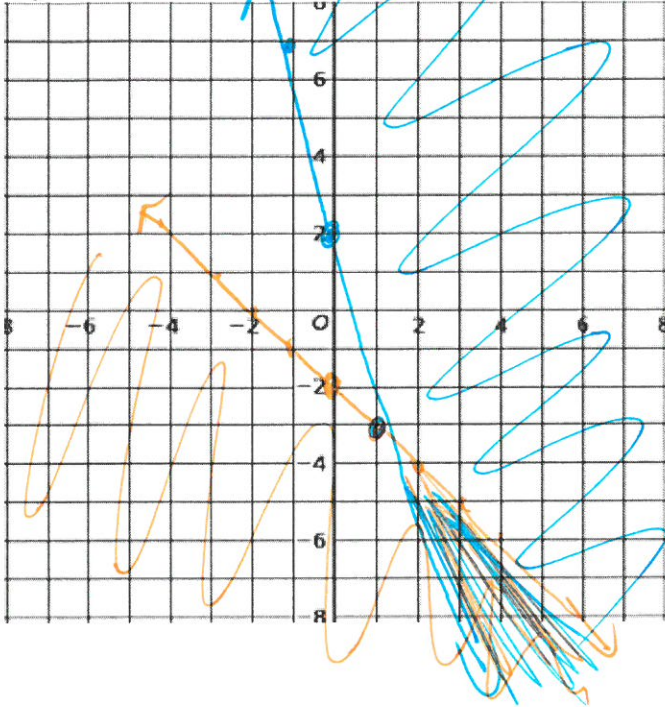


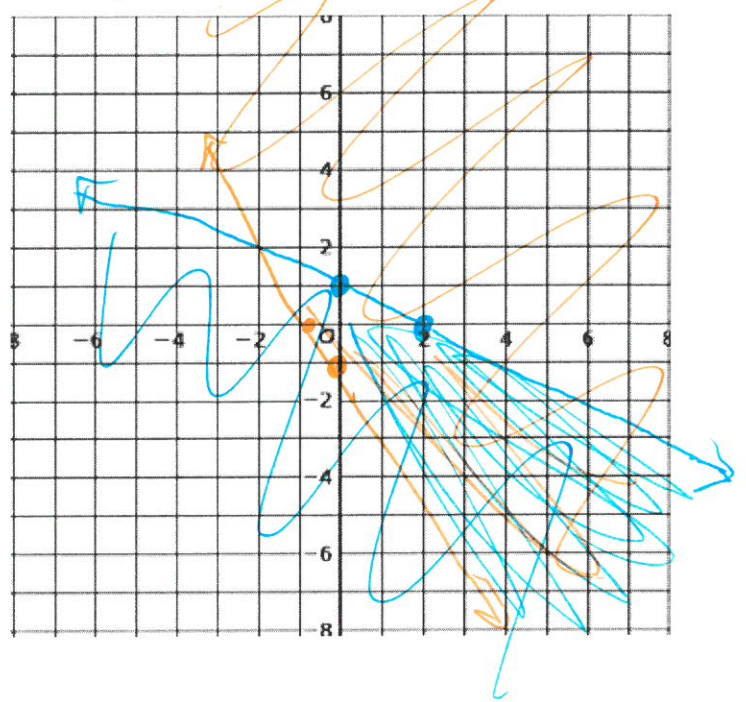
Directions: Graph each of the linear inequalities.
When done, submit by scanning and upload to
Canvas

1. $y \leq -x - 2$
 $y \geq -5x + 2$

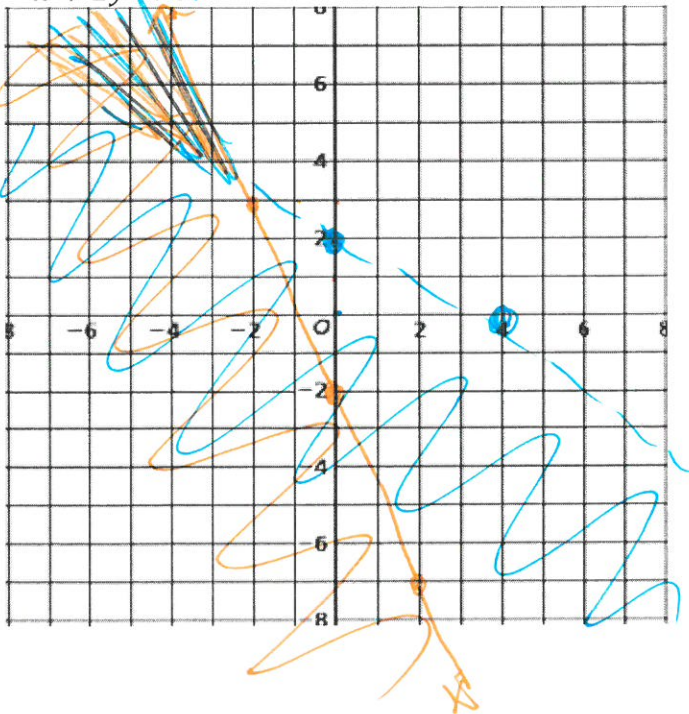


Graphing Systems of Linear Inequalities - Practice

2. $3x + 2y \geq -2$
 $x + 2y \leq 2$



3. $y \leq -\frac{5}{2}x - 2$
 $x + 2y < 4$



4. $y \geq \frac{2}{3}x + 3$
 $4x + 3y > -9$

