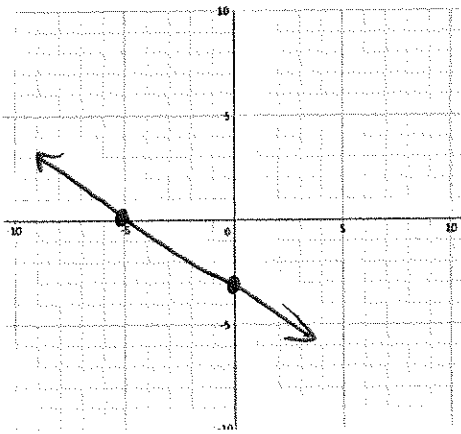


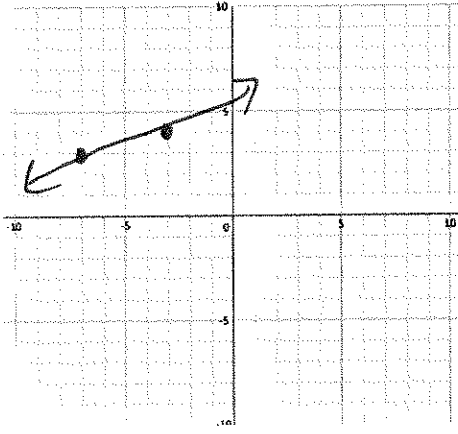
Building Functions—Quiz 1

Directions: Graph a linear equation given the following information.

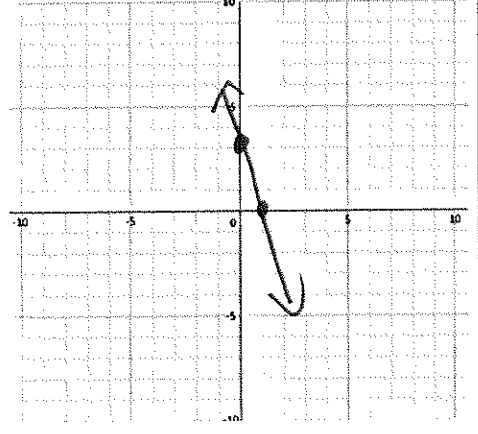
1. Sketch a graph of a linear function with an x-intercept of $(-5, 0)$ and a y-intercept of $(0, -3)$



2. Sketch a graph of a linear function with a coordinate point of $(-7, 3)$ and a slope of $\frac{1}{4}$

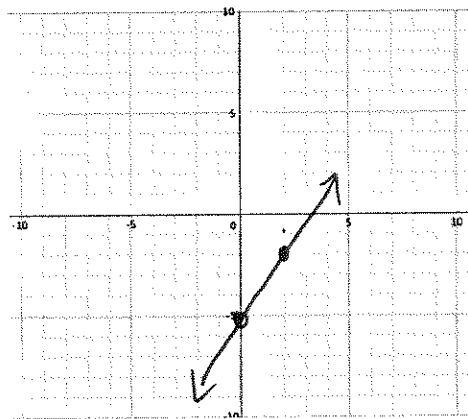


3. Sketch the linear function with a y-intercept of $(0, 3)$ and a slope of -3 .

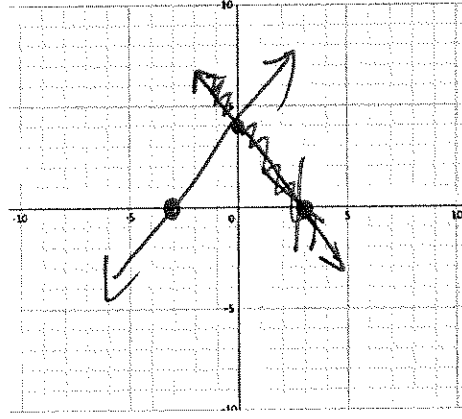


Directions: Graph the linear equation given the equation in slope-intercept or standard form.

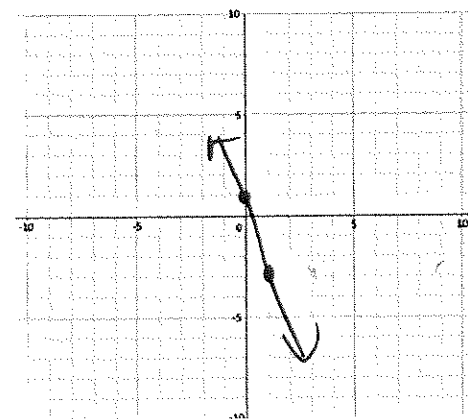
4. $y = \frac{3}{2}x - 5$



5. $-4x + 3y = 12$



6. $y = -4x + 1$



7. $4x + 2y = -16$

