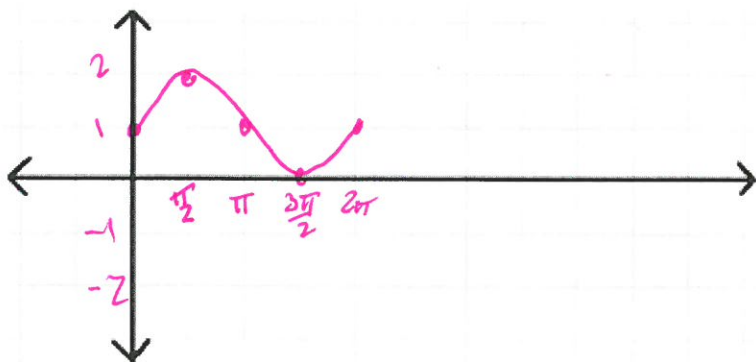


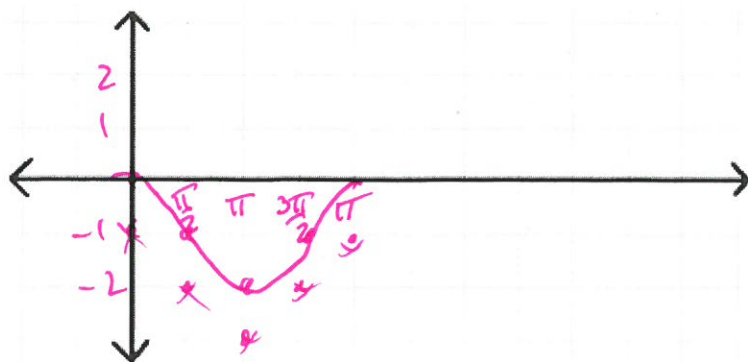
RED PROBLEMS

Graph the equations.

1. $y = \sin x + 1$

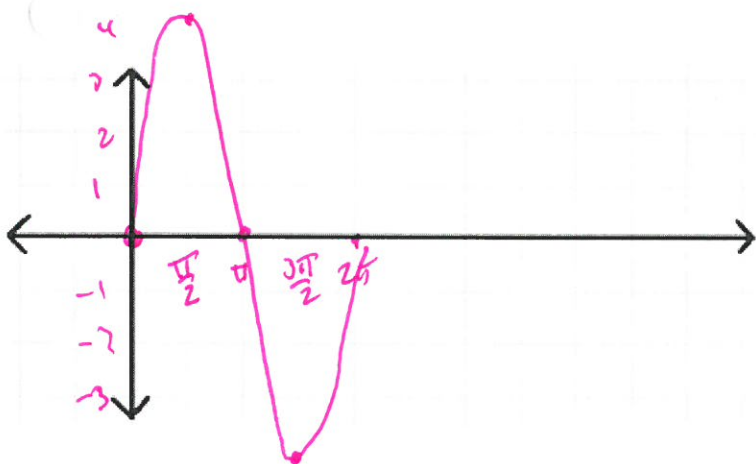


2. $y = \cos x - 1$

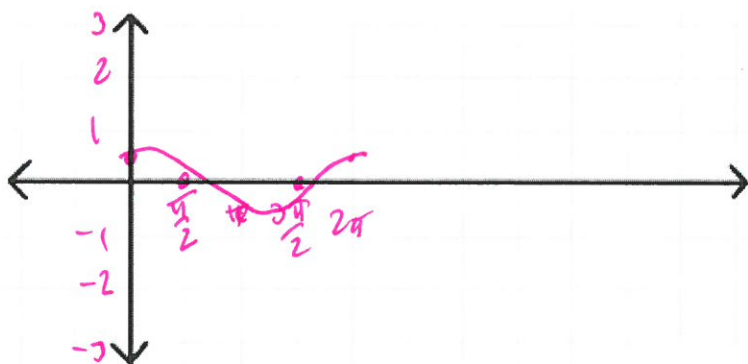


SEE TEACHER TO CHECK YOUR ANSWERS NOW. Teacher: _____

3. $y = 4\sin x$

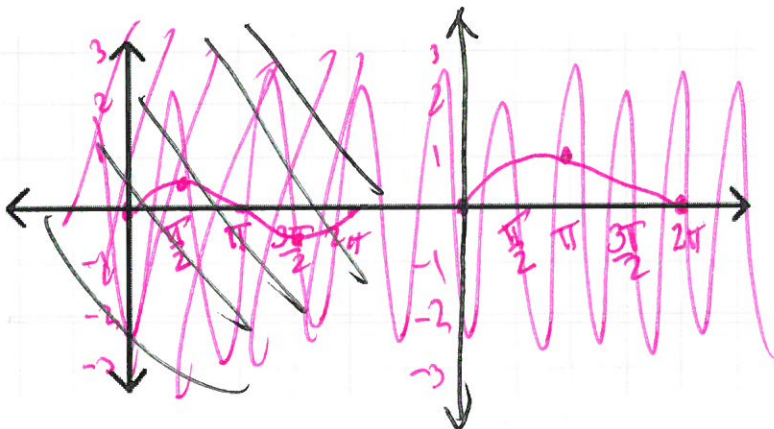


4. $y = \frac{1}{2}\cos x$

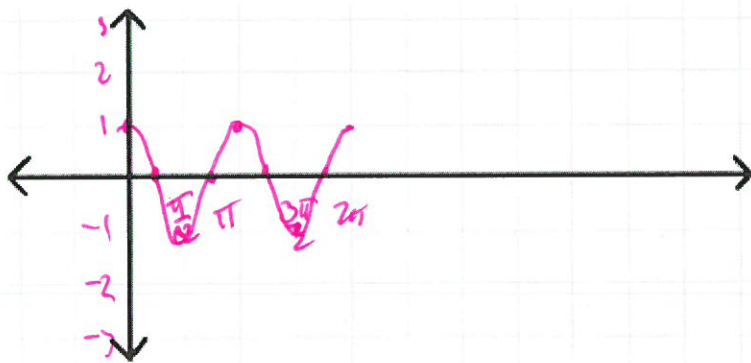


SEE TEACHER TO CHECK YOUR ANSWERS NOW. Teacher: _____

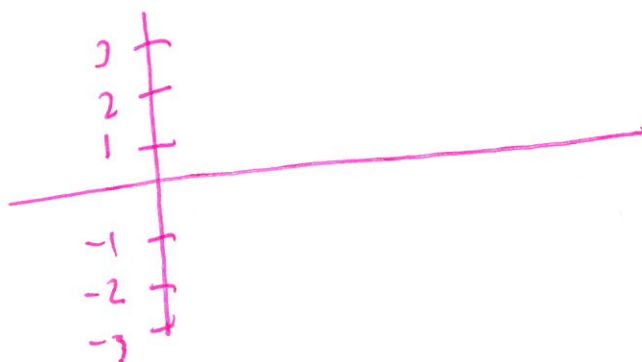
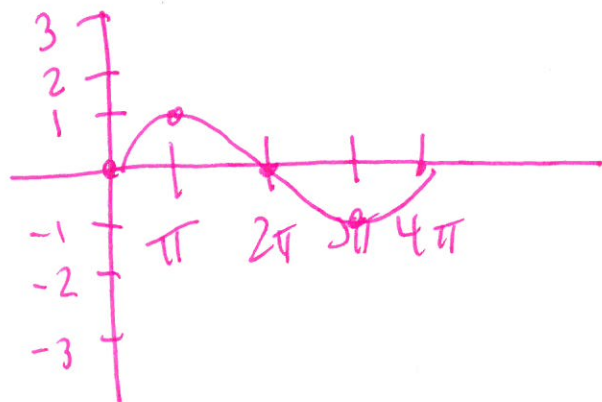
5. $y = \sin \frac{1}{2}x$



6. $y = \cos 2x$



SEE TEACHER TO CHECK YOUR ANSWERS NOW. Teacher: _____

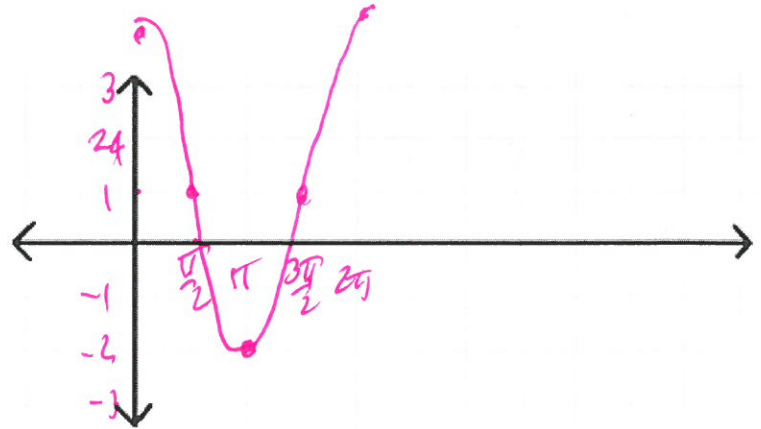
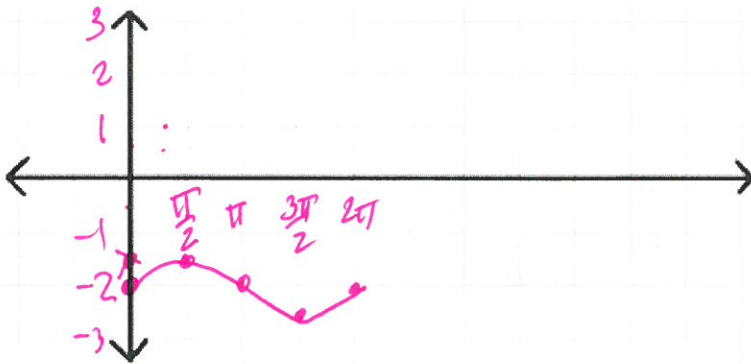


YELLOW PROBLEMS

Ch the equations.

1. $y = \frac{1}{2}\sin x - 2$

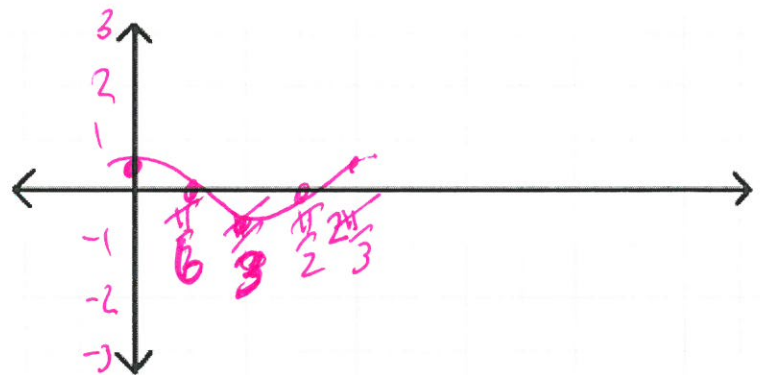
2. $y = 3\cos x + 1$



SEE TEACHER TO CHECK YOUR ANSWERS NOW. Teacher: _____

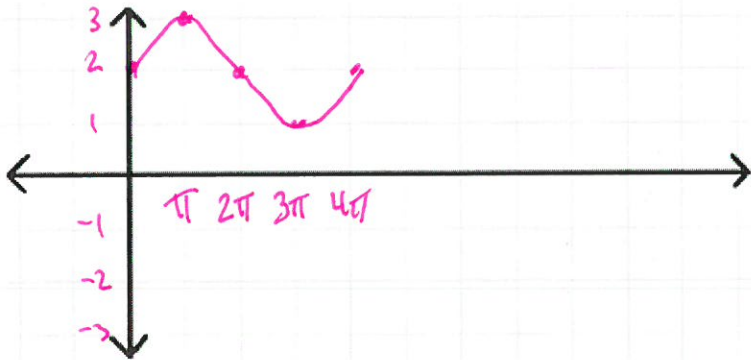
3. $y = 4\sin \frac{1}{2}x$

4. $y = \frac{1}{2}\cos 3x$



SEE TEACHER TO CHECK YOUR ANSWERS NOW. Teacher: _____

5. $y = \sin \frac{1}{2}x + 2$



6. $y = \cos 4x - 3$



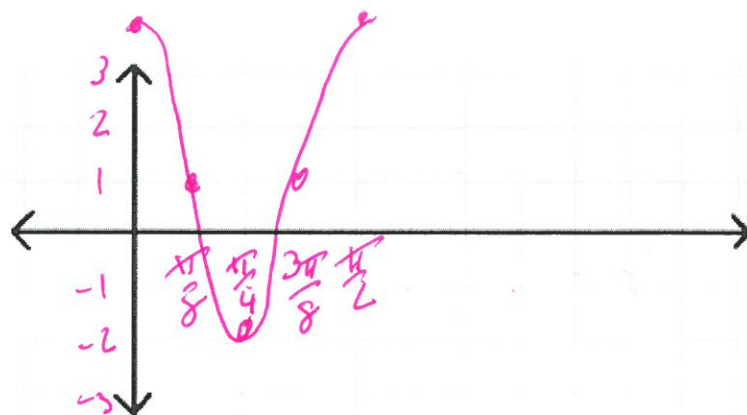
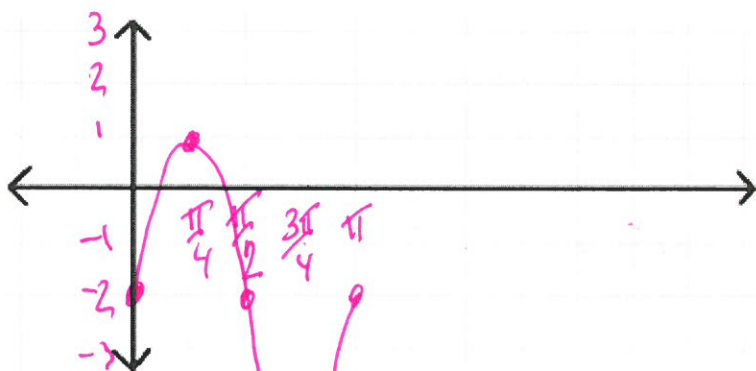
SEE TEACHER TO CHECK YOUR ANSWERS NOW. Teacher: _____

GREEN PROBLEMS

C h the equations.

1. $y = 3\sin 2x - 2$

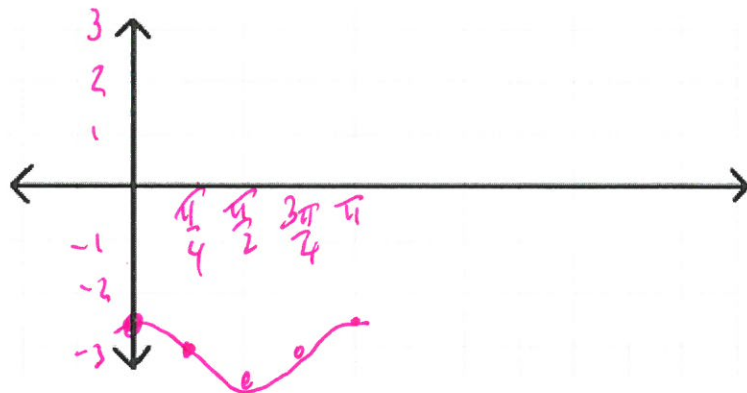
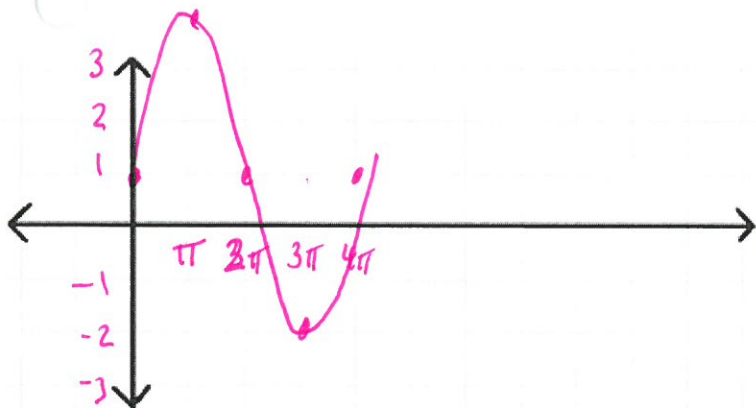
2. $y = 3\cos 4x + 1$



SEE TEACHER TO CHECK YOUR ANSWERS NOW. Teacher: _____

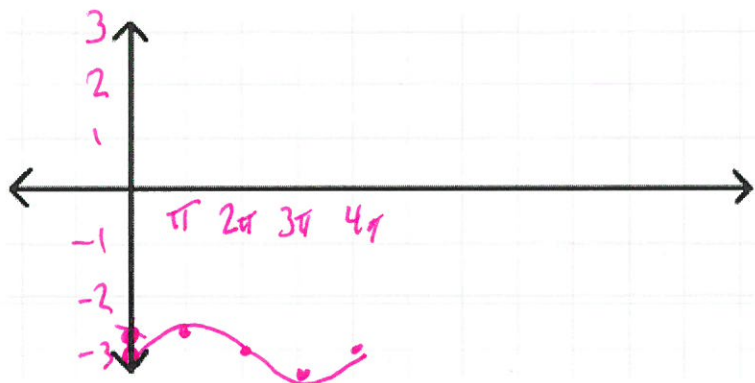
3. $y = 3\sin \frac{1}{2}x + 1$

4. $y = \frac{1}{2}\cos 2x - 3$

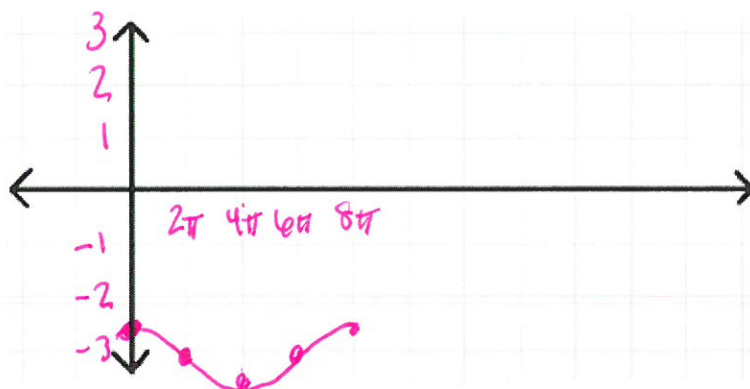


SEE TEACHER TO CHECK YOUR ANSWERS NOW. Teacher: _____

5. $y = \frac{1}{4} \sin \frac{1}{2}x - 3$



6. $y = \frac{1}{3} \cos \frac{1}{4}x - 3$



SEE TEACHER TO CHECK YOUR ANSWERS NOW. Teacher: _____